



RAMA
UNIVERSITY

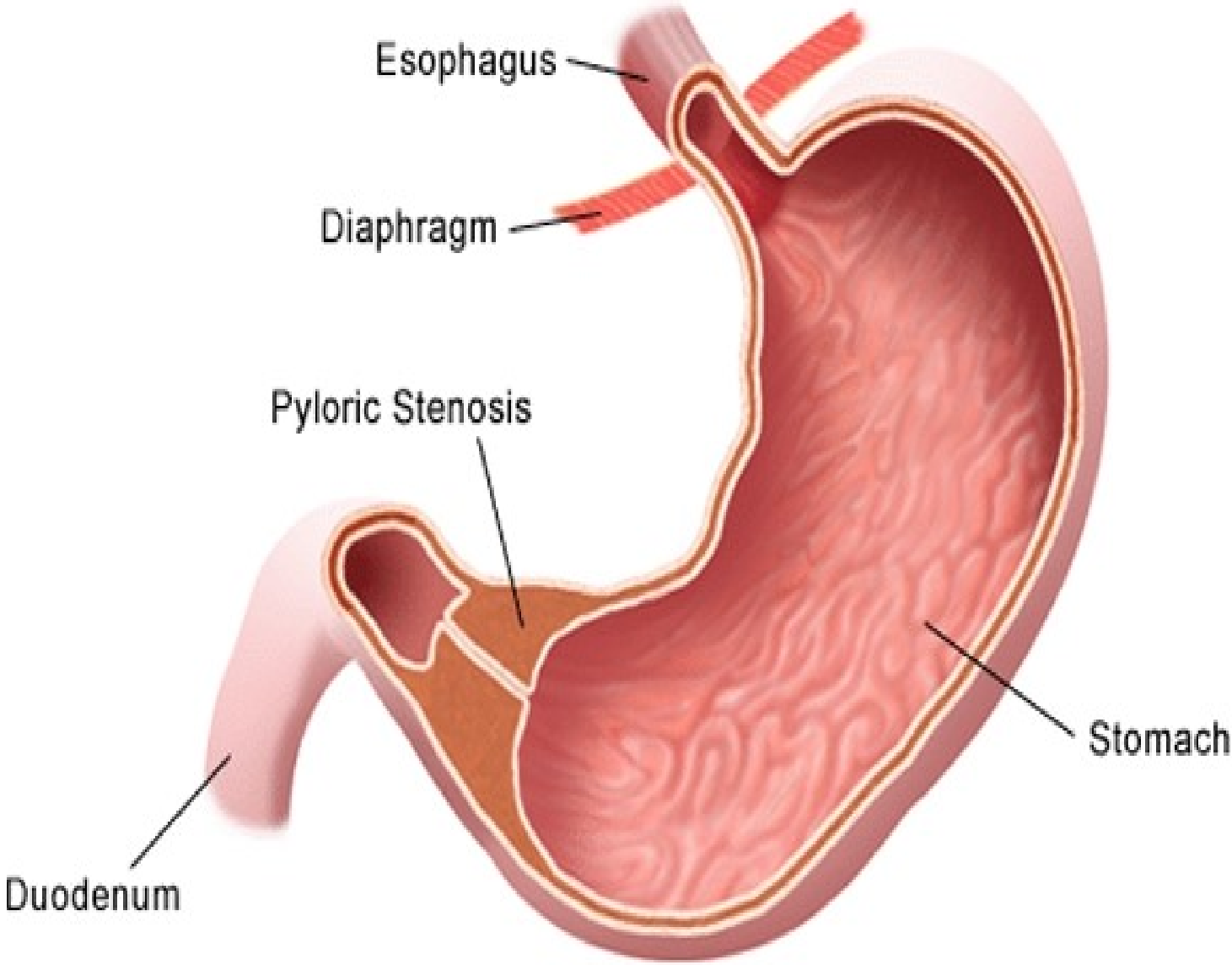
w w w . r a m a u n i v e r s i t y . a c . i n

FACULTY OF NURSING

PYLORIC STENOSIS

Nandni Shivhare
Nursing Tutor
R.C.N

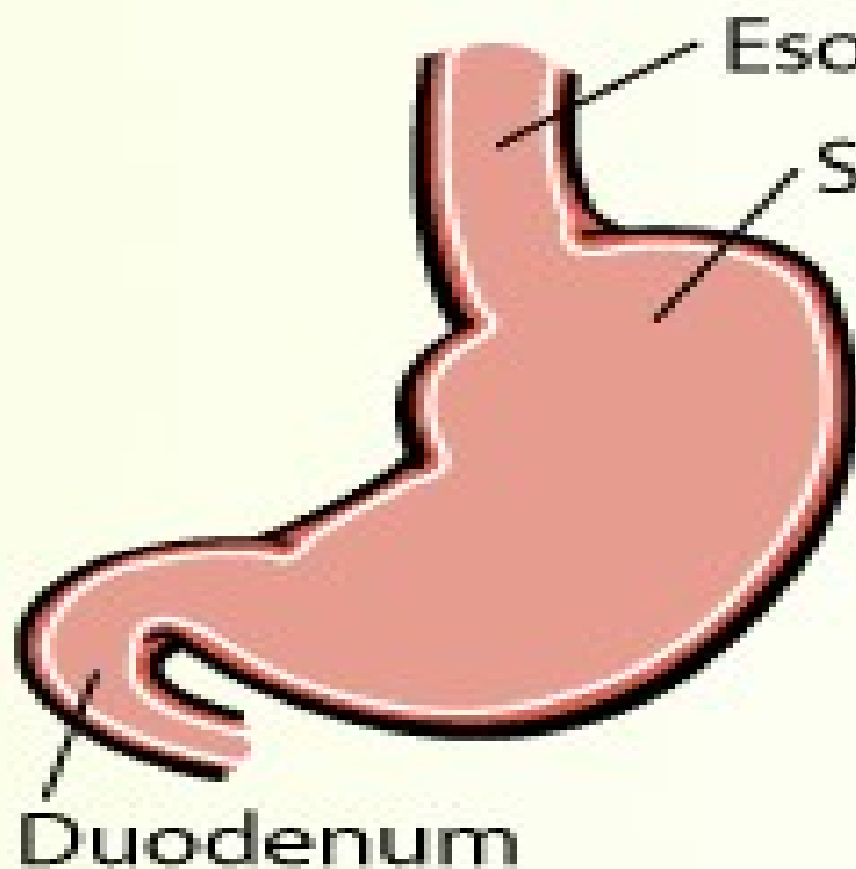
Pyloric Stenosis



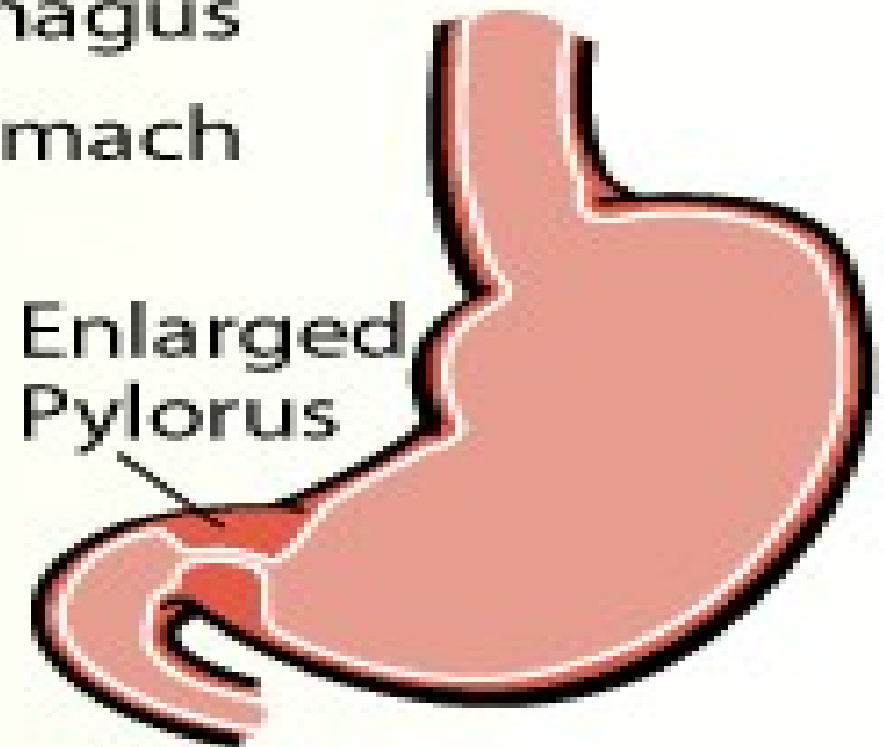
PYLORIC STENOSIS

DEFINITION-

It is a narrowing of the opening from the stomach to the first part of the small intestine.(Pylorous)



**Normal
Anatomy**



**Pyloric
Stenosis**

Clinical features-

- **Vomiting**
- **Poor feeding**
- **Weight loss**

Diagnostic Evaluation-

- **History collection**
- **Physical examination**
- **Radiographic imaging studies**
- **USG**
- **Blood test**

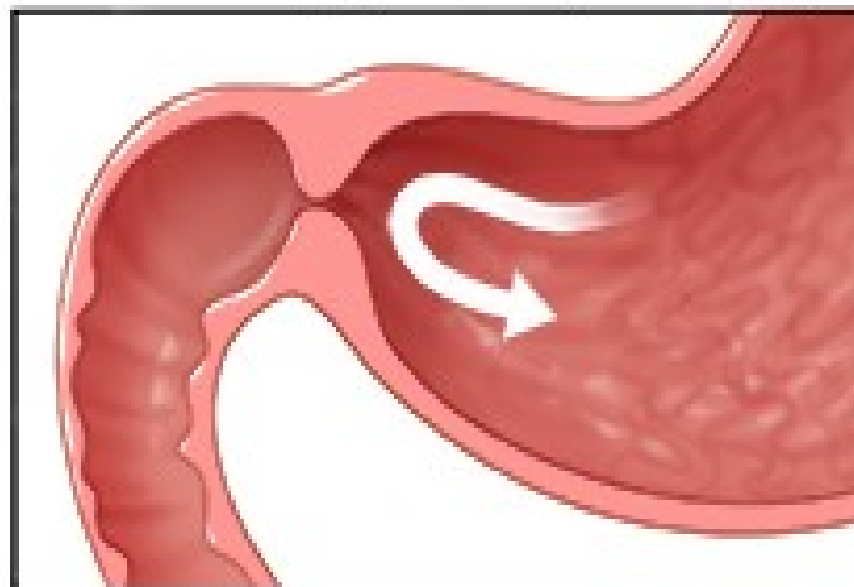
Management-

- **The danger of pyloric stenosis comes from the dehydration and electrolyte disturbance rather than underlying problem itself.**
- **The baby must be initially stabilized by correcting the dehydration and abnormal high blood ph.**

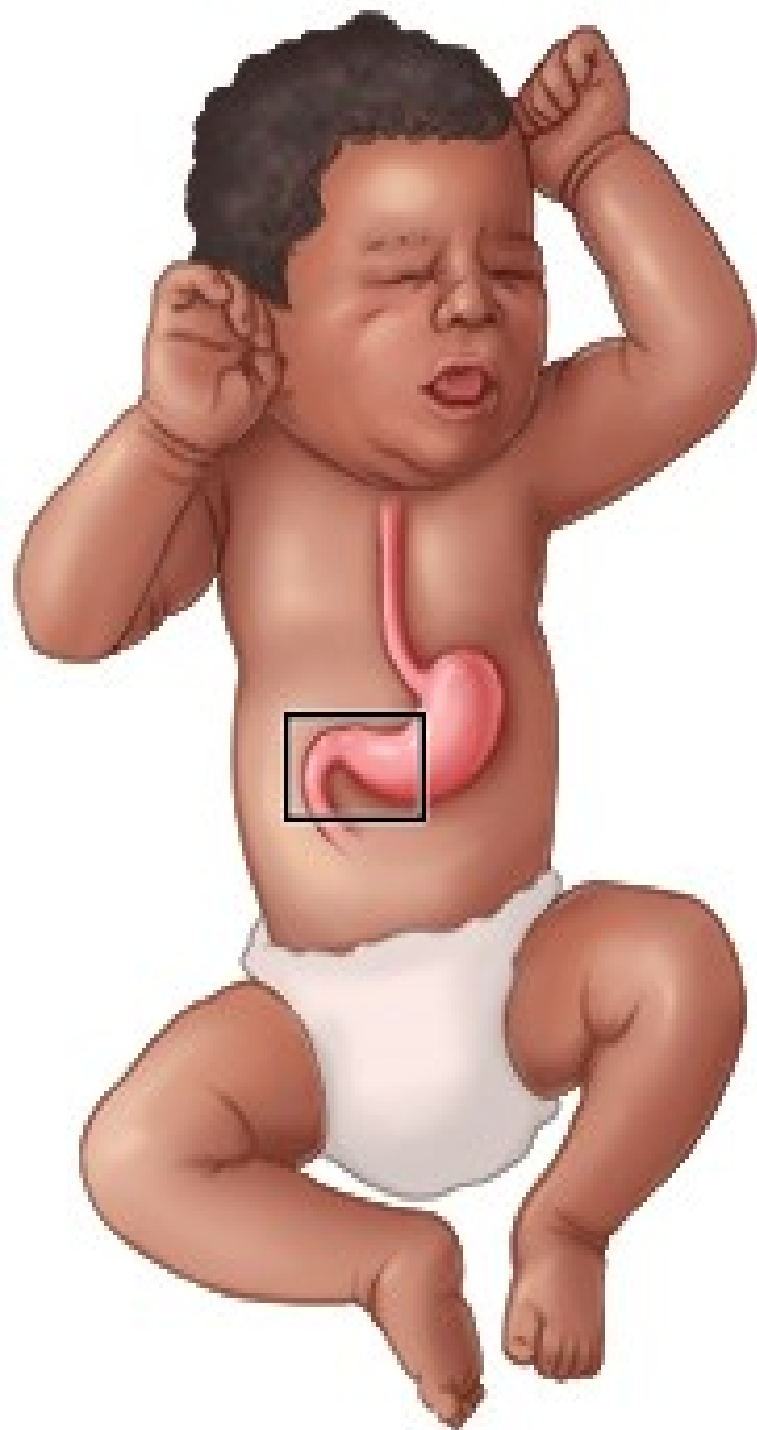
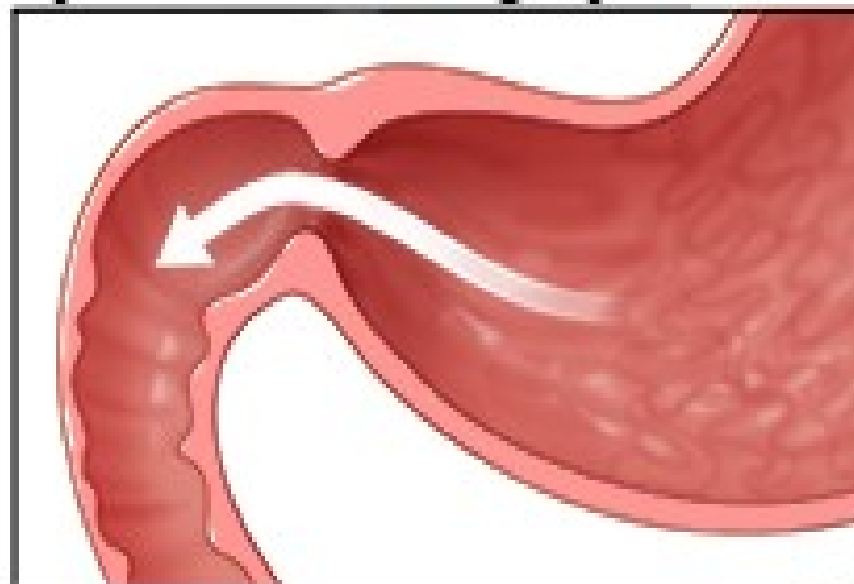
Surgery-

- **Pyloromyotomy (dividing the muscle of pylorus to open up gastric outlet)**

Narrowed pylorus (stenosis)



Pylorus after surgery



THANK

YOU