



# RAMA UNIVERSITY

[www.ramauniversity.ac.in](http://www.ramauniversity.ac.in)

## FACULTY OF ENGINEERING & TECHNOLOGY

### BCA-302 Computer Networks

### Lecture-30

**Mr. Dilip Kumar J Saini**

Assistant Professor

Computer Science & Engineering

# OUTLINE

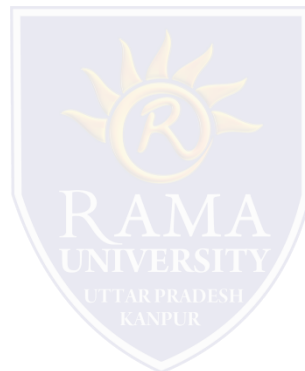
➤ **LEASED LINES**

➤ **FRAME RELAY**

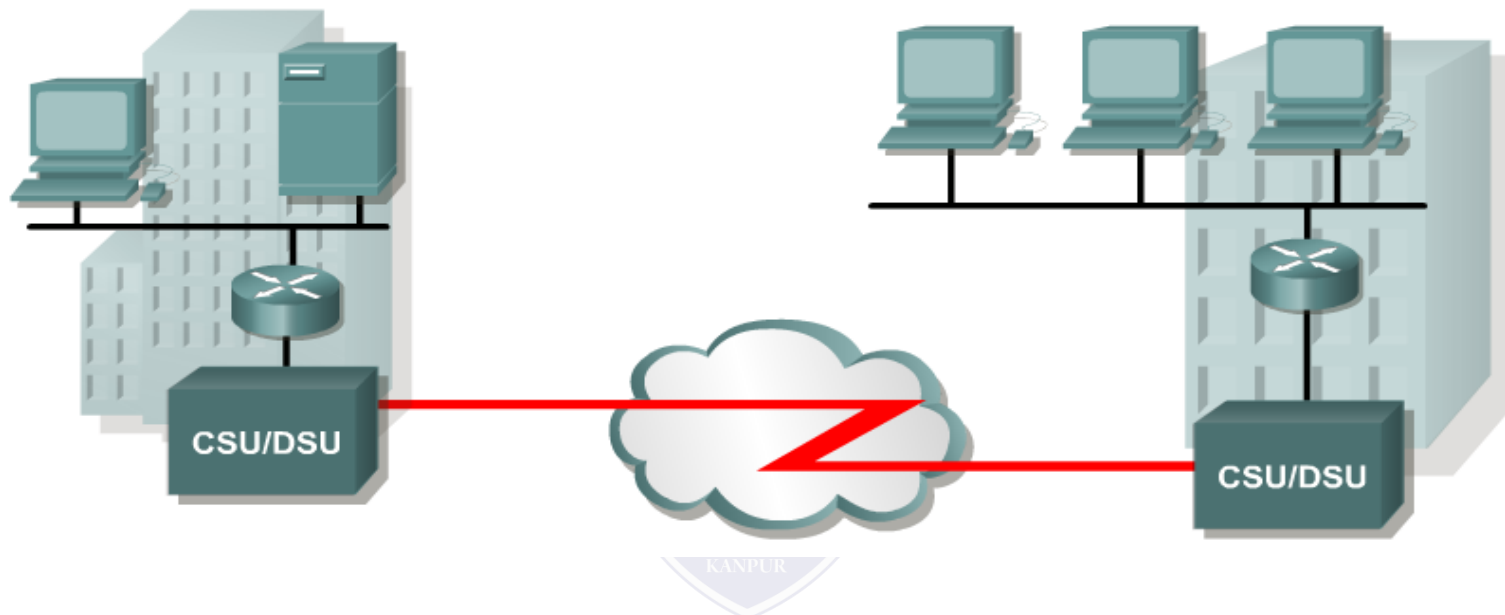
➤ **ATM**

➤ **DSL**

➤ **CABLE MODEM**

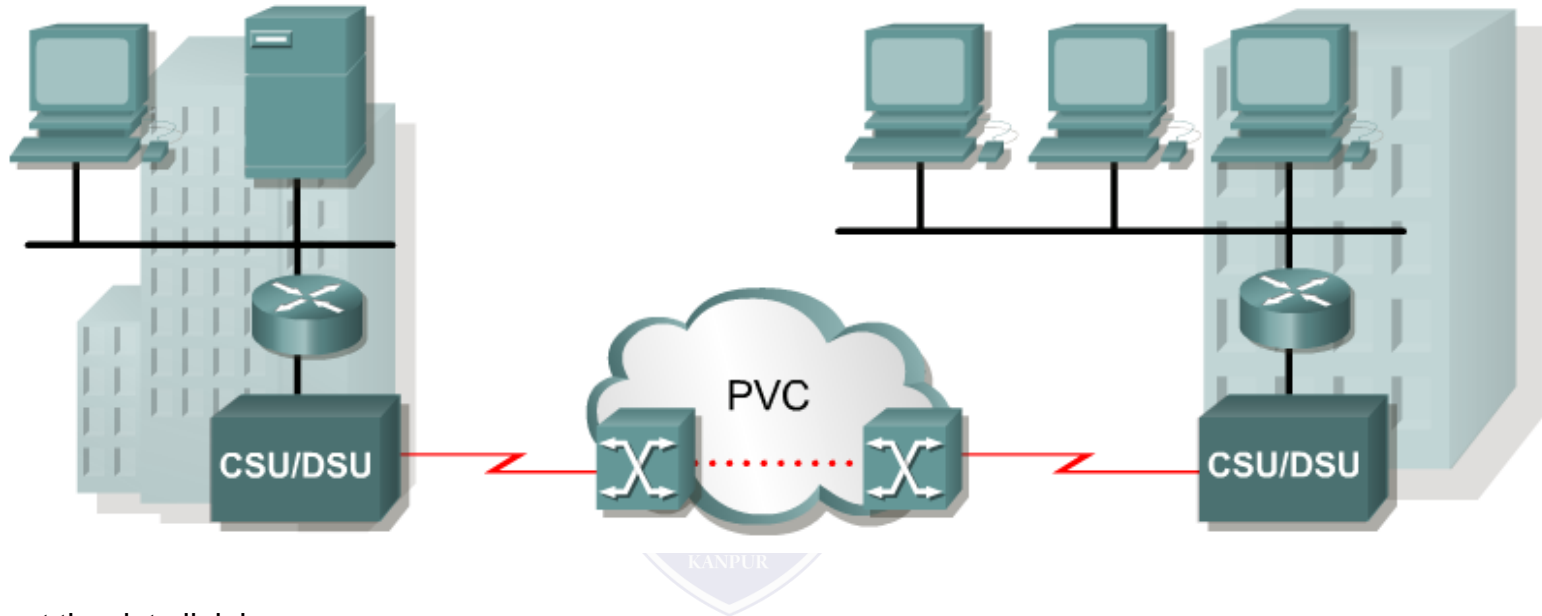


# LEASED LINES



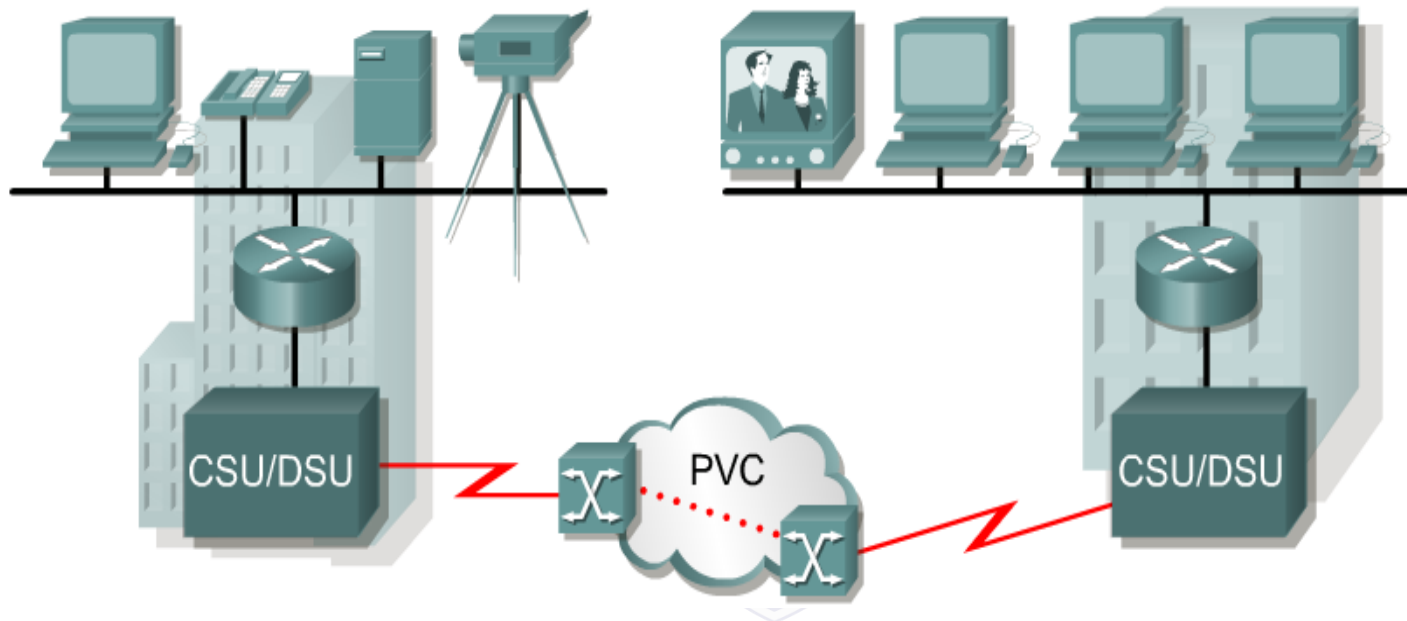
- A point-to-point link provides a pre-established WAN communications path from the customer premises through the provider network to a remote destination.
- Point-to-point lines are usually leased from a carrier and are called leased lines.
- Leased lines are available in different capacities.
- Leased lines provide direct point-to-point connections between enterprise LANs and connect individual branches to a packet-switched network.

# FRAME RELAY



- Works at the data link layer.
- Frame Relay implements no error or flow control.
- The simplified handling of frames leads to reduced latency, and measures taken to avoid frame build-up at intermediate switches help reduce jitter.
- Most Frame Relay connections are PVCs
- Frame Relay provides permanent shared medium bandwidth connectivity that carries both voice and data traffic.

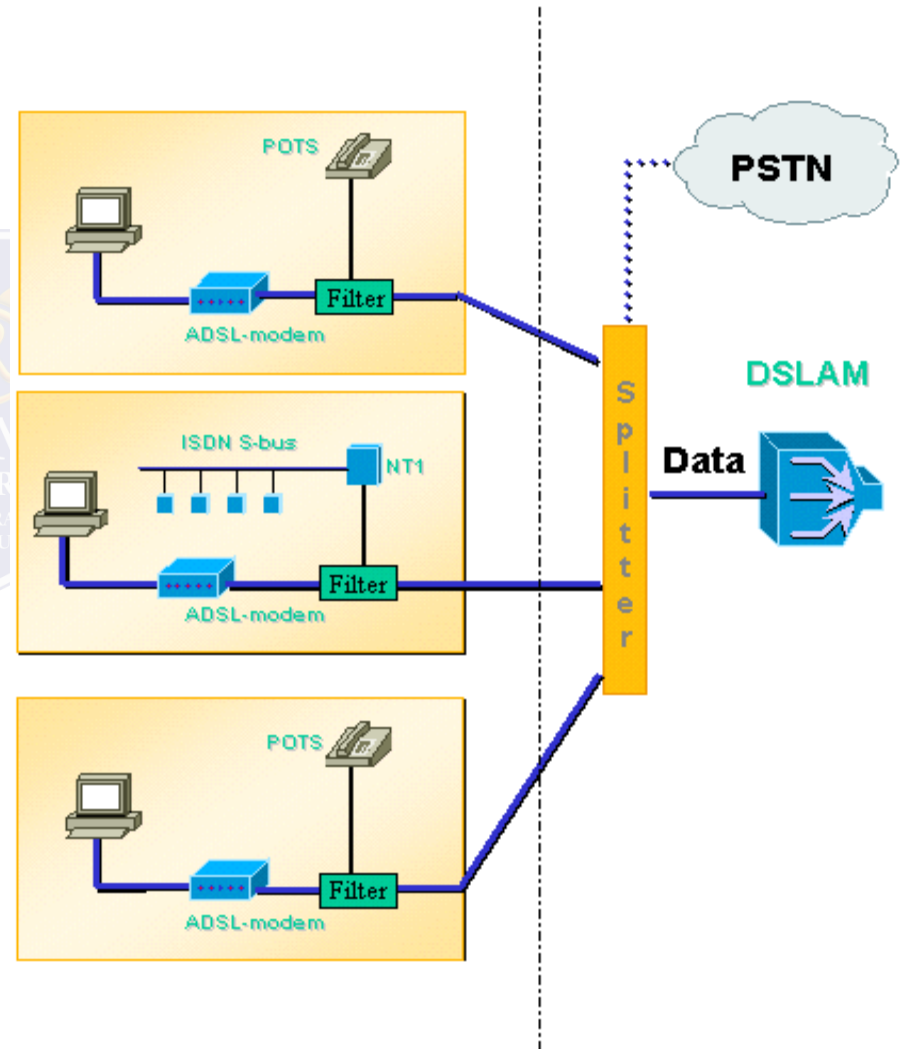
# ATM



- Communications providers saw a need for a permanent shared network technology that offered very low latency and jitter at much higher bandwidths.
- Their solution was Asynchronous Transfer Mode (ATM). ATM has data rates beyond 155 Mbps.

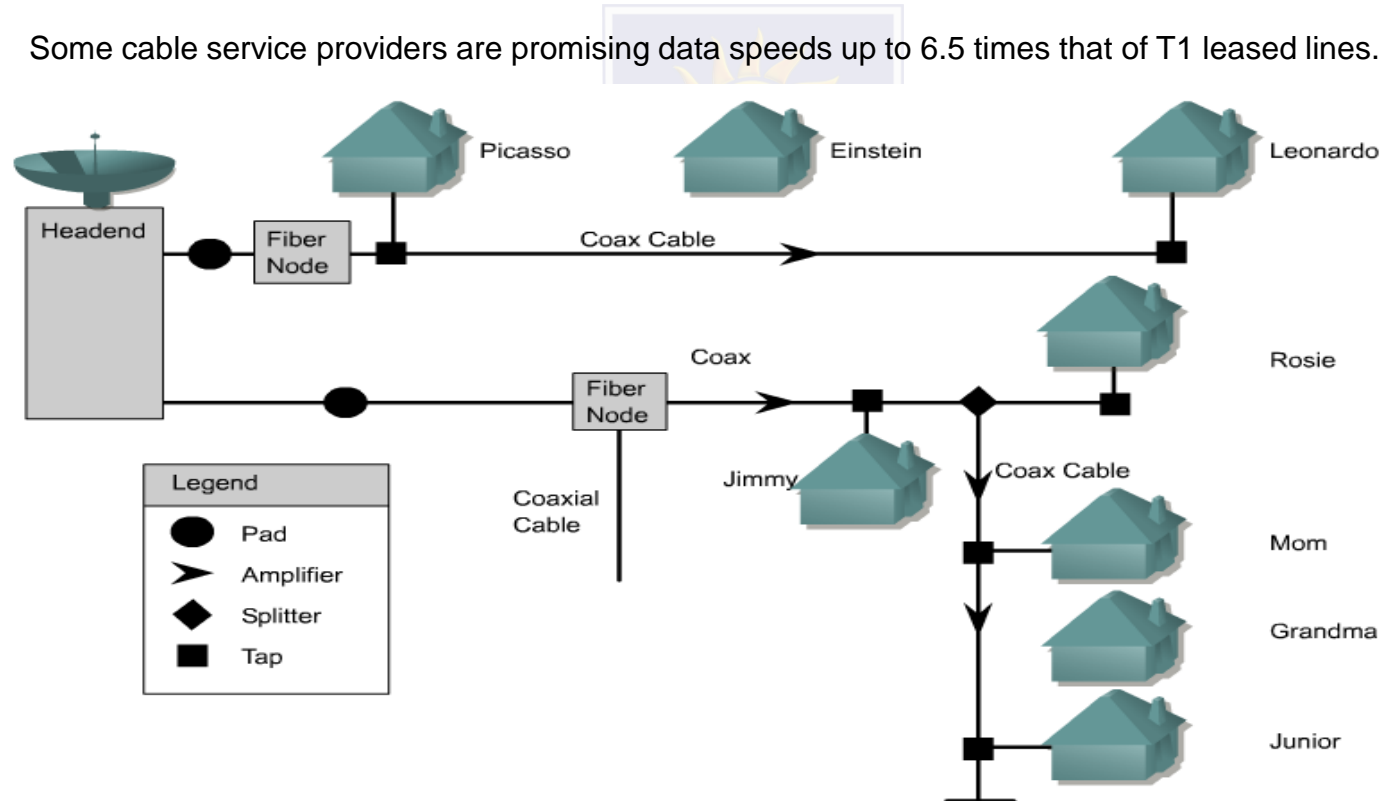
# DSL

- Multiple DSL subscriber lines are multiplexed into a single, high capacity link by the use of a DSL Access Multiplexer (DSLAM) at the provider location.
- DSLAMs incorporate TDM technology to aggregate many subscriber lines into a less cumbersome single medium, generally a T3/DS3 connection techniques to achieve data rates up to 8.192 Mbps.



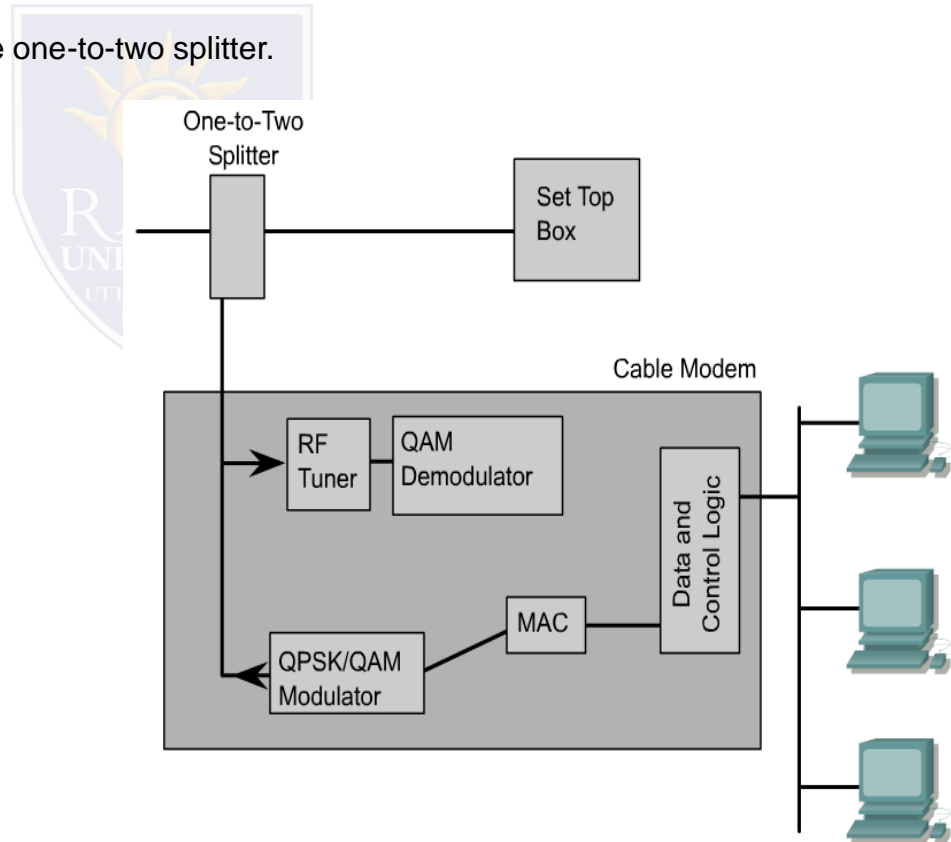
# CABLE MODEM

- Coaxial cable is widely used in urban areas to distribute television signals.
- This allows for greater bandwidth than the conventional telephone local loop.
- Enhanced cable modems enable two-way, high-speed data transmissions using the same coaxial lines that transmit cable television.
- Some cable service providers are promising data speeds up to 6.5 times that of T1 leased lines.



# CABLE MODEM

- Cable modems provide an always-on connection and a simple installation.
- A cable modem is capable of delivering up to 30 to 40 Mbps of data on one 6 MHz cable channel.
- With a cable modem, a subscriber can continue to receive cable television service while simultaneously receiving data to a personal computer.
- This is accomplished with the help of a simple one-to-two splitter.





# Multiple Choice Question

## MUTIPLE CHOICE QUESTIONS:

Sr no	Question	Option A	Option B	OptionC	OptionD
1	In HTTP pipelining _____	multiple HTTP requests are sent on a single TCP connection without waiting for the corresponding responses	multiple HTTP requests can not be sent on a single TCP connection	multiple HTTP requests are sent in a queue on a single TCP connection	multiple HTTP requests are sent at random on a single TCP connection
2	FTP server listens for connection on port number _____	20	21	22	23
3	In FTP protocol, client contacts server using ____ as the transport protocol.	transmission control protocol	user datagram protocol	datagram congestion control protocol	stream control transmission protocol
4	The File Transfer Protocol is built on _____	data centric architecture	service oriented architecture	client server architecture	connection oriented architecture
5	In File Transfer Protocol, data transfer cannot be done in _____	stream mode	block mode	compressed mode	message mode

# REFERENCES

- <http://www.engppt.com/2009/12/networking-fourzan-ppt-slides.html>

